

PLAN VIEW
HORIZONTAL SCALE: 1 : 250

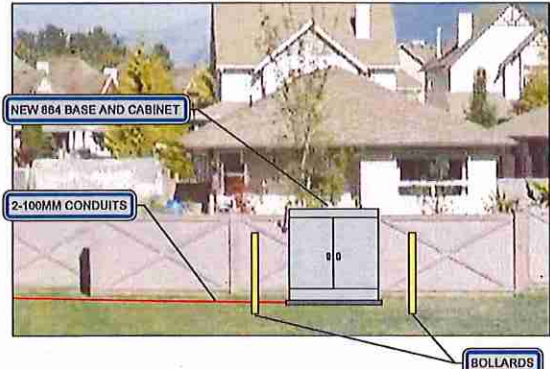
RECEIVED AND PROCESSED
BY LAND DEVELOPMENT
INITIALS

APR 07 2017



NOTES:

| | |
|-----|---|
| 500 | INSTALL 894F FDH ON CONCRETE PAD WITH 2x BOLLARDS. SEE DETAIL 'C' SHEET 500 |
| 501 | STUB 2-100mm DUCTS 0.6m ABOVE FINISHED GRADE |
| 502 | INSTALL (2) 100mm DBII PVC CONDUIT L= 30.0 m. SEE DETAIL 'B' SHEET 500 |
| 503 | CORE FOR 2-100mm CONDUIT IN TELUS MH-395 SEE DETAIL 'A' SHEET 500 |
| 504 | NEW 90° BEND 2-100mm DBII PVC CONDUIT |



PROMONTORY RD AND CHESTER DR
FDH - SITE PLAN
N.T.S.

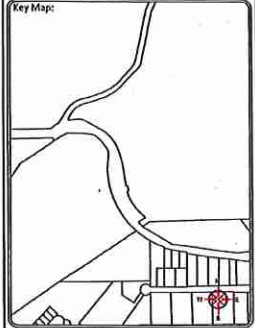
CAUTION:
GAS FACILITIES IN AREA
LOCATE AND EXPOSE
PRIOR TO COMMENCING WORK

METHOD OF PLACEMENT
VIA OPEN TRENCH UNLESS
OTHERWISE NOTED

LOCATE AND PROTECT ALL
OTHER UTILITIES IN FIELD

ALL MEASUREMENTS ARE IN
METERS UNLESS NOTED

Sheet Title:
Design
Function:
Make ready Task:
FDH Placement



BC ONE CALL
CALL BEFORE YOU DIG
1-800-485-5049
OR BY CELLULAR 800
UNCOVER AREA 887-1948
CALL AT LEAST TWO FULL BUSINESS DAYS
BEFORE YOU PLAN TO DIG

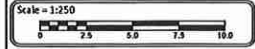
Client:
TELUS

Prepared By:
AFL
SUITE 200 - 7485 130 ST
Surrey BC V3W 3H8

| Rev | Date | Notes | QC |
|-----|------|-------|----|
| - | - | - | - |
| - | - | - | - |
| - | - | - | - |
| - | - | - | - |
| - | - | - | - |

DRAWN BY: FC: April 2017
DESIGNED BY: KADTEC SYSTEMS

Proprietary Information
Not for disclosure except under written agreement



Project:
Falcon 2017
SRDS 3023A - 2629281
Sardis, BC

File Name:
CWD
SRDS
SRDS
3023A
Network Number
2629281
Sheet Number
600



Date: May 10, 2017 Author: Kat McCawley 604-444-3732 ext 247, 604-366-8857 Project: SRDS 3023A - 2629281
Universal Flagging: 170-8061 Lougheed Hwy, Burnaby, BC V5A 1W9 Office: 604-444-3732 Dwg: 001

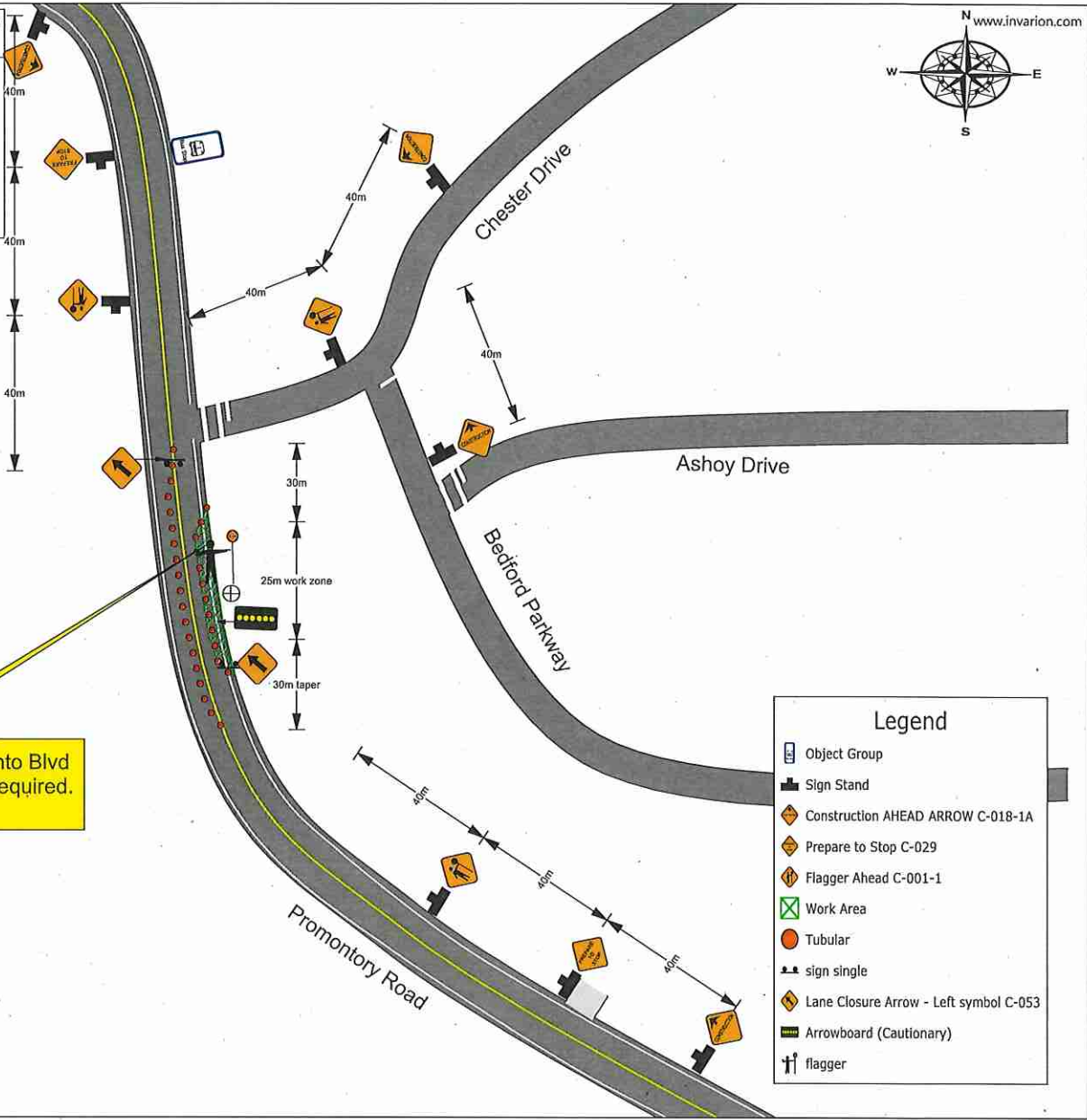
Comments:

AFL Global/ Telus
Kelly Buchanan: 250-485-7330

City of Chilliwack
Job location: Promontory Road and Chester Drive
Closure description: Lane push on Promontory Road
Tentative date and hours: May 29 - June 7, 2017
Job description: Civil Construction - New conduit and pad construction for fibre distribution Hub Cabinet

Advanced Warning Sign distances may be shortened due to Urban block length

TCP to assist work vehicles onto Blvd and assist pedestrians when required.



- Legend
- Object Group
 - Sign Stand
 - Construction AHEAD ARROW C-018-1A
 - Prepare to Stop C-029
 - Flagger Ahead C-001-1
 - Work Area
 - Tubular
 - sign single
 - Lane Closure Arrow - Left symbol C-053
 - Arrowboard (Cautionary)
 - flagger